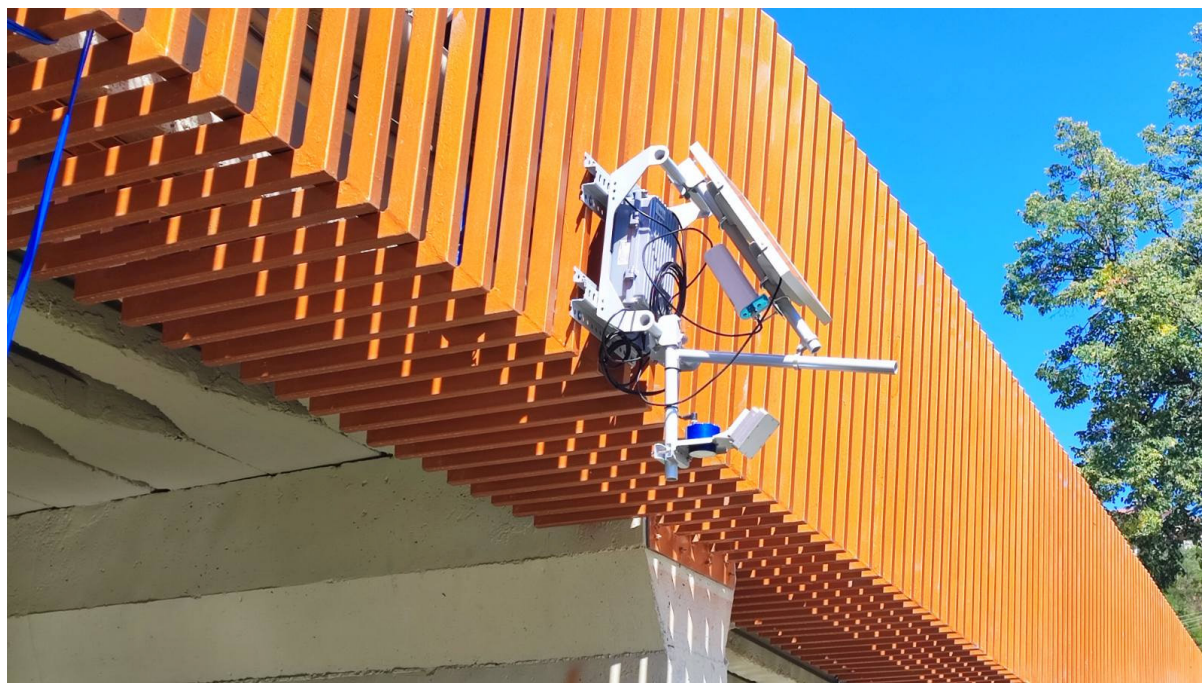


New Station on the Kriva River Basin for improved urban flood management within the UrbanFloods Project



On August 27th (Wednesday), 2025, within the framework of the UrbanFloods project, co-financed by the European Union through the IPA ADRION program, a water flow monitoring station was successfully installed in the pilot area of the Kriva River in the Municipality of Kriva Palanka.

The installation of the station was carried out by The Center for Knowledge Management (CKM), as a project partner, in cooperation with Faculty of Computer Science and Engineering (FCSE) and the Municipality of Kriva Palanka. This activity represents a significant step in the broader efforts of the project to strengthen urban resilience through the implementation of integrated, advanced decision support systems in flood risk management.

The new station represents a modern technological solution for tracking river flow and collecting real-time data. These data will enable:

- Analysis of hydrological trends
- Integration with the central UrbanFloods decision support system
- Timely institutional response in case of increased risk
- Better planning in water resource management

Urban floods are one of the most frequent and dangerous natural phenomena that develop rapidly, cause significant material damage, and endanger the daily lives of

citizens. Kriva Palanka, as an urban area near a river flow, is particularly susceptible to such risks. Therefore, the new monitoring station is of crucial importance for establishing a system of continuous monitoring, timely warning, and protection against urban floods.

This activity is part of the broader strategy of UrbanFloods, which, through pilot actions, innovative technologies, and regional cooperation, aims to create a foundation for more resilient and safer communities in the Adriatic-Ionian region.

The installation of the monitoring station on the Kriva River, implemented by the Center for Knowledge Management (CKM) in partnership with Faculty of Computer Science and Engineering (FCSE) and the Municipality of Kriva Palanka, strengthens the capacity of the local community for preventive and timely response, contributing to risk reduction, protection of the population, and sustainable management of natural resources.